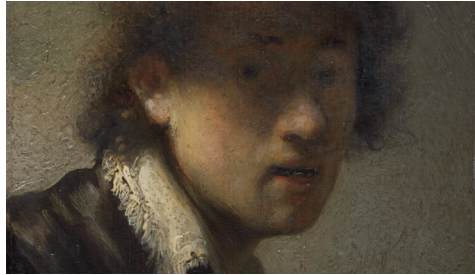


YOUR VISIT

Under these new circumstances, your visit to the Museum might look slightly different, but there is still plenty for you to see and do behind our big blue doors.

FREE ENTRY booking essential.
Visit ashmolean.org for more information



EXHIBITIONS

Find out more about our programme of exhibitions and free displays on our website. Become a member to enjoy free entry to all exhibitions for a year, plus exclusive benefits ashmolean.org/membership

ASHMOLEAN FROM HOME

If you're not yet venturing out, you can still enjoy the Museum and be inspired by our collections online. Browse our *Young Rembrandt* exhibition, explore our digital collections, enjoy a jigsaw puzzle, watch short films and much more.



CAFÉ

Our café will be open with a selection of food and drink for you to enjoy. Choose a coffee and pastry after your visit, or take a treat away with you. Look on our website for further updates on the café and restaurant.

SHOP

Our Museum shop will be open. Wearing a face covering will be required when visiting our shop and payment will be by card only. Every purchase helps to support the Ashmolean. You can also shop online at shop.ashmolean.org



INSPIRING MINDS, SINCE 1683

OPENING TIMES

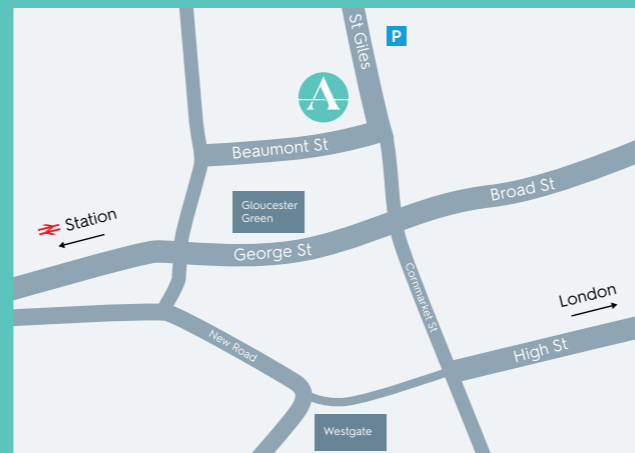
Daily, 10am–5pm
For information on accessibility call 01865 278105

Beaumont Street
Oxford OX1 2PH
Telephone 01865 278 000
ashmolean.org

SOCIAL

Follow us for daily posts from our collections.

/AshmoleanMuseum
 AshmoleanMuseum
 @AshmoleanMuseum



Visit our website for the latest information on visiting the Museum and new safety measures ashmolean.org

Sign-up to receive regular information and updates about reopening ashmolean.org/newsletter



Supported by
ARTS COUNCIL ENGLAND



100%
Paper from well-managed forests
FSC® C013002
Please consider the environment and reuse, recycle or return when you are finished using it.

ASHMOLEAN MUSEUM
OXFORD

WELCOMING
YOU BACK



FREE ENTRY
Booking Required
Open daily
10am–5pm

Visit our website for the latest information on visiting the Museum and safety measures ashmolean.org



The Ashmolean is the University of Oxford's museum of art and archaeology. As Britain's first public museum, we're home to half a million years of human history and creativity, from ancient Egyptian mummies to modern art, and much more.



EXPLORE the ancient world of Egypt, Sudan, Greece, Rome and the near East.



TRAVEL across the globe to Japan, China, India, and the Middle East.



'A SPECIAL PLACE THAT IS FULL OF WONDERFUL THINGS'

THE GUARDIAN

FREE ENTRY
Booking essential



STEP BACK IN TIME to medieval and Renaissance Europe.



IMMERSE YOURSELF in 18th-20th century art, from the Pre-Raphaelites through the Post-Impressionists to contemporary sculpture.

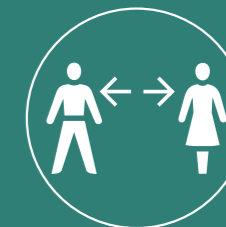
OUR NEW SAFETY MEASURES

To ensure you have an enjoyable visit we've made a few changes that put your safety, as well as the safety of our staff, first.



BOOKING

All visitors must book in advance, for general visits as well as exhibition visits.



SOCIAL DISTANCING

The number of visitors to the Museum have been reduced so you can maintain social distancing during your visit.



CLEANING & HYGIENE

We've increased the frequency of our cleaning regimes and added hand sanitisation points throughout the Museum.



FACILITIES

We've introduced socially-distanced queuing, reduced lift occupancy and closed our cloakroom/lockers. Toilet facilities are available.



MUSEUM ROUTES

To help maintain social distancing we may ask you to observe one way routes in certain places around the Museum.



FACE COVERINGS

Please wear face coverings, for your safety and the safety of other visitors and staff.

